



NATIONAL

HISPANIC

SCIENCE

NETWORK

**Looking Back to Look Ahead: Rediscovering and Expanding
the Foundations of Substance Use Research with Diverse
Populations as we Enter a Post-Pandemic World**

September 22 – 24, 2021

**Looking Back to Look Ahead: Rediscovering and Expanding the Foundations of Substance Use
Research with Diverse Populations as we Enter a Post-Pandemic World**

Welcome from the Conference Scientific Chairs

On behalf of the Conference Planning Committee and the Steering Committee of the National Hispanic Science Network (NHSN), we welcome you to the 21st Annual International Conference of the NHSN. Our theme this year is “Looking back to look ahead: Rediscovering and expanding the foundation of substance use research with diverse populations as we enter a post-pandemic world”, in recognition of the COVID-19 pandemic that has permanently altered the ways in which we perceive and understand salient life experiences, including substance use and misuse. The pandemic has also underscored longstanding structural, social, and health inequities that have plagued racial/ethnic minorities for centuries. As we continue to face extraordinary challenges posed by this pandemic, we also reflect on the unique opportunities we have to expand the future of our basic and applied research focused on preventing and treating substance misuse. Such knowledge is critical to better understand the short- and long-term implications of pandemics on substance use to inform future intervention and prevention strategies. In this conference, we will rediscover the historical foundations of our field, highlight the remarkable progress we have achieved, and reflect on the critical challenges that must inform our future work. We will also reflect on structural issues in the US that perpetuate inequities, as well as the ways in which our research must continue to evolve according to this understanding. In essence, a cross-theme of this conference will be the critical need to always look back, prior to looking ahead. This year’s meeting will engage participants in discussion on biomedical, clinical, behavioral issues, basic science, and translational studies in substance use research, while maintaining our commitment to the collective goal to foster the development of independent investigators in our field. We are very thankful to our colleagues who in an unprecedented short period of time developed vaccines, which have allowed us to physically reconnect with family members, friends, and colleagues.

This year we are joined by two plenary speakers, Drs. Kizzmekia Corbett and Cherilyn Sirois. Dr. Corbett is a leading coronavirus scientist who recently joined the prestigious Harvard T.H. Chan School of Public Health and was instrumental in groundbreaking research that directly led to the development of the *Moderna COVID-19* vaccine. Dr. Cherilyn Sirois is a scientific editor at the highly impactful journal *Cell* and has substantial experience helping authors develop their manuscripts for high-impact journals, having worked as scientific research editor at Cell Reports prior to joining Cell (where she continues to focus on research articles).

Our meeting and pursuing our long-term mission are more critical than ever. Thus, we are excited and committed to bringing you recent advancements in substance use research with timely discussions about the impact of COVID-19. We hope that you will join us to bring together our community of researchers and will participate in our planned activities towards fostering the advancement of the careers of young investigators. In addition, we will be covering pressing issues and recent advancements in substance use research during 3 scientific sessions that will focus on 1) Substance Use Research with Diverse Populations: Leadership and Policy Implications, 2) Emerging Topics: Short- and Long-Term Implications of Covid-19 on Substance Use, 3) Intramural Scientists at NIH: Leaders in Substance Related Research. These scientific sessions will

**Looking Back to Look Ahead: Rediscovering and Expanding the Foundations of Substance Use
Research with Diverse Populations as we Enter a Post-Pandemic World**

feature distinguished researchers who have made significant contributions to these scientific areas. Drs. Albert Avila (Deputy Director, Office of Research Training, Diversity, and Disparities, National Institute on Drug Abuse) and Marvin Diaz (Associate Professor, Department of Psychology, Binghamton University) will be leading a breakout session on grant writing and setting yourself up for success as junior scholars transition from students to independent researchers. We continue our commitment to provide a dedicated space for our early career members to share their exciting work at the Data Blitz and the Poster Sessions. We have added a roundtable discussion on *Work Life Balance* organized for NHSN members. This timely discussion will be important as we consider the challenges for underrepresented communities in maintaining a work life balance.

The planning committee co-chairs depend on a network of individuals who volunteer their time and energy to the NHSN. We would like to give a special thanks to the conference planning committee: Drs. James Anthony, Wanda Lipscomb, Caroline Palavicino-Maggio, Judith Arroyo, Laura O'Dell, Tara Bautista, Danielle Levitt, Lucas Albrechet-Souza, Angel Algarin, Alejandra Jacotte-Simancas, Erika Perez, Sergio Iniguez, Arturo Zavala, Alejandra Fernandez, Tiffany Gonzalez, Tyler Nelson, Daisy Ramirez-Ortiz, Mayra Vargas-Rivera, Monica Goncalves-Garcia, Carlos Bolanos-Guzman, Flavia Souza-Smith, and Irma Vega de Luna. A special thanks as well to those members who volunteered their time to review abstracts for Data Blitz and the Poster Sessions. We want to give a special recognition to Melissa Prestwood, who provided support and guidance to the conference chairs and committee. It is with pleasure that we acknowledge our funders: the National Institute on Drug Abuse (NIDA), National Institute on Alcohol Abuse and Alcoholism (NIAAA), and National Institute on Minority Health and Health Disparities (NIMHD) of the National Institutes of Health (NIH), in addition to Louisiana State University Health Sciences Center New Orleans and Michigan State University College of Human Medicine.

We look forward to reconnecting in this exciting conference,

Conference Chairs:

Marisela Morales, PhD, Chief Integrative Neuroscience Research Branch; Chief, Neuronal Networks Section; Director, Core Facilities; National Institute on Drug Abuse Intramural Program

Ruben Parra-Cardona, PhD, Associate Professor, Steve Hicks School of Social Work, The University of Texas at Austin

Miguel Pinedo, PhD, Assistant Professor, Department of Kinesiology and Health Education, The University of Texas at Austin

Looking Back to Look Ahead: Rediscovering and Expanding the Foundations of Substance Use
Research with Diverse Populations as we Enter a Post-Pandemic World

Schedule of Events

Wednesday, September 22, 2021

All time listed are Central Standard Time Zone

12:00 PM - 12:10PM

Welcome from Scientific Co-Chairs

12:10 PM – 1:10 PM

PODS Mentoring Session

Co-Chairs: **Lucas Albrechet-Souza, PhD**, Instructor of Physiology, Louisiana State University
Health Sciences Center New Orleans

Tara Bautista, PhD, Postdoctoral Associate, Interdisciplinary Stress Center,
School of Medicine, Yale University

Featuring: **NHSN Veterano Honoree**

Felipe Gonzales-Castro, PhD, Professor, College of Nursing & Health Innovation,
Arizona State University

Description: Peer-Onsite-Distance (PODS): A model for Mentoring Underrepresented Minority Faculty is a part of the program designed as a multilevel approach to peer and faculty mentors providing site-specific guidance. Both the mentees and mentors' commitment and roles are clearly defined while the mentees are given access across the two and a half days to resources and individual support. The plan is for these new relationships to be continued throughout the year and renewed annually during the conference. The impact of the strong URM influence in the academic career of the members will take time to develop. Groups will be added to breakout rooms during virtual meeting.

1:20 PM – 2:50 PM

Michigan: State and Local Perspectives on Underserved Communities, Needs, & New Research

Chair: **James C. (Jim) Anthony, PhD**, Professor, Epidemiology & Biostatistics, College of
Human Medicine, Michigan State University

Wanda Lipscomb, PhD, Senior Associate Dean, Diversity and Inclusion, College of
Human Medicine, Michigan State University

Description: Professors Jim Anthony and Wanda Lipscomb will introduce the session and our speakers. The session will focus on issues faced by underserved communities in the State of Michigan and the local western Michigan community, with focus on needs related to behavioral health, including this COVID-19 pandemic, as well as a consideration of some important scientific issues faced in minority health research in the US generally.

Presenters: **Debra Furr-Holden, PhD**, Professor, Associate Dean for Public Health & Human
Development, Director of the Flint Center for Health Equity Solutions, College of
Human Medicine, Michigan State University

At the Crossroads: the COVID-19 and Opioid Syndemic

Irving Vega, PhD, Associate Professor of Translational Neuroscience, College of
Human Medicine, Michigan State University

Looking Back to Look Ahead: Rediscovering and Expanding the Foundations of Substance Use Research with Diverse Populations as we Enter a Post-Pandemic World

COVID-19 Disclosed Implicit Biases & Can Guide Healthcare Systems Transformations and Future Community-Based Participatory Research

Lisa Lowery, MD, MPH, CPE, FAAP, FSAHM Associate Professor of Pediatrics and Human Development, Assistant Dean for Diversity & Cultural Initiatives, College of Human Medicine, Michigan State University

COVID Various Perspectives

Cara Poland, MD, MEd, FACP, DFASAM, Assistant Professor of Obstetrics & Gynecology, College of Human Medicine, Michigan State University, Addiction Medicine Medical Director, Spectrum Health

COVID, Isolation, and Mental Health

Sean Valles, PhD, Associate Professor and Director, Center for Bioethics & Social Justice, College of Human Medicine, Michigan State University

Mass Incarceration, the Drug War, and Health Equity

3:00 PM – 4:30 PM

Scientific Session: Substance Use Research with Diverse Populations: Leadership and Policy Implications

Co-Chairs: **Caroline Palavicino-Maggio, PhD**, Research Fellow, Department of Neurobiology, Harvard Medical School

Ruben Parra-Cardona, PhD, Associate Professor and Coordinator for Latin American Initiatives, Steve Hicks School of Social Work, University of Texas at Austin

Presenters: **Patricia Molina, MD, PhD**, Richard Ashman, PhD Professor and Head, Department of Physiology, Louisiana State University Health Sciences Center New Orleans

Historical Perspective of the National Hispanic Science Network; El Faro Still Stands!

Franklin Carrero-Martinez, PhD, National Academy of Sciences

From the Lab to the Halls of the UN: Making Your Research Policy Relevant

Leena Mittal, MD, FACLP, Director, Division of Women's Mental Health, Department of Psychiatry, Brigham Women's Hospital, Instructor of Psychiatry, Harvard Medical School

From Practice to Policy: Using Clinical Expertise to Become an Advocate for Change

Description: In this session, we will first reflect on the historical influence of the NSHN in the field of substance use research and training, as well as key areas of future potential impact for the organization. In addition, we will have two presentations focused on policy as this is an area frequently overlooked by basic and applied scientists. Thus, policy experts will help us engage in a conversation about the various definitions of policy, the significance of policy, and the critical role that NSHN scientists have in the promotion of policy with relevance to research focused on addressing health disparities.

Looking Back to Look Ahead: Rediscovering and Expanding the Foundations of Substance Use Research with Diverse Populations as we Enter a Post-Pandemic World

4:30 PM – 5:30 PM

Poster Session

Co-Chairs: **Angel Algarin, PhD, MPH**, T32 Postdoctoral Fellow, University of California, San Diego
Tiffany Gonzalez, BA, Graduate Student, California State University, Long Beach
Tyler Nelson, Undergraduate Student, California State University, Long Beach
Daisy Ramirez-Ortiz, PhD, Postdoctoral Associate, Florida International University

Description: Each poster presenter has pre-recorded their presentation. Each presentation video and abstract are posted on the NHSN website (see link below). We ask that everyone watch the presentations prior to the meeting date. During this one-hour poster session, poster presenters will join breakout rooms in small groups where attendees can visit to ask questions.

Abstracts &

Presentations: https://www.the-nhsn.org/Conference/2021_poster_session.aspx
See page 13 for list of today's presenters.

5:30 PM – 7:00 PM

ECLC Virtual Social

Early Career Leadership Committee invites everyone to stay logged in, grab a drink, appetizers and party hats, and join us as we celebrate the 21st birthday of NHSN.

Thursday, September 23, 2021

All time listed are Central Standard Time Zone

8:30 AM – 10:00 AM

Scientific Session: Emerging Topics: Short- and Long-Term Implications of COVID-19 on Substance Use

Co-Chairs: **Miguel Pinedo, PhD**, Assistant Professor, Department of Kinesiology & Health Education, University of Texas at Austin
Danielle Levitt, PhD, Postdoctoral Fellow, Department of Physiology, Louisiana State University Health Sciences Center New Orleans

Presenters: **Irma Cisneros, PhD**, Assistant Professor of Pathology, University of Texas Medical Branch at Galveston
Astrocyte Immune Responses to SARS-CoV2 and Fentanyl Co-exposure
Priscilla Martinez, PhD, Associate Scientist, Alcohol Research Group
Changes in Alcohol Use and Mental Health Due to the COVID-19 Pandemic Among Latinxs in the UNS: Longitudinal Data from the National Alcohol Survey
Mariana Sanchez, PhD, Assistant Professor, Department of Health Promotion & Disease Prevention, Florida International University

The Impact of COVID-19 on Recent LatinX Immigrants in South Florida: Preliminary Findings from An Established Immigrant Receiving Community

Description: This session will focus on emerging issues that have been introduced or exacerbated by the COVID-19 pandemic and how it relates to substance use.

Looking Back to Look Ahead: Rediscovering and Expanding the Foundations of Substance Use Research with Diverse Populations as we Enter a Post-Pandemic World

Panelists will highlight results from their current on-going research that has taken place during the pandemic, including how they addressed research-related challenges introduced by the pandemic, such as revising methodologies to virtual settings and best practices, and new research avenues including the intersection of SARS-CoV-2 infection and substance abuse.

10:10 AM – 11:10 AM

Plenary Presentation

Presenter: **Kizzmekia Corbett, PhD**, Assistant Professor, Harvard TH Chan School of Public Health

Rapid Development of a COVID-19 Vaccine: Then and Now

11:15 AM -11:45 AM

Membership Meeting

Presenters: **Luis Natividad, PhD**, Assistant Professor of Pharmacology & Toxicology, University of Texas at Austin

Miguel Cano, PhD, Associate Professor, Department of Epidemiology, Florida International University

Alice Cepeda, PhD, Associate Professor, Suzanne Dworak-Peck School of Social Work, University of Southern California

Avelardo Valdez, PhD, Cleofas and Victor Ramirez Professor of Practice, Policy, Research and Advocacy for the Latino Population, University of Southern California

Description: Members of NHSN Steering Committee will give updates about NHSN, Early Career Leadership Committee, membership and eIRTI.

11:45 AM – 12:45 AM

Break

12:45 PM– 2:15 PM

Scientific Session: Intramural Scientists at NIH: Leaders in Substance Related Research

Co-Chairs: **Judith Arroyo, PhD**, Special Assistant to the Director, National Health Institute on Minority Health and Health Disparities

Marisela Morales, PhD, Sr. Investigator; Chief, Integrative Neuroscience Research Branch, Chief Neuronal Networks Section, National Institutes of Health, National Institute on Drug Abuse Intramural Research Program

Laura O'Dell, PhD, Associate Vice President for Research, Professor of Psychology, University of Texas at El Paso

Presenters: **Nancy Diazgranados, MD, MS**, Deputy Clinical Director, Office Clinical Director, National Institute of Alcohol Abuse and Alcoholism, National Institutes of Health

Exploring the Neurobiology of Alcohol Use Disorders

Paule Valery Joseph, PhD, MS, FNP-BC, RN, CTN-B, Principal Investigator, Division of Intramural Research, National Institute on Alcohol Abuse and Alcoholism, National Institute of Nursing Research, National Institutes of Health

Looking Back to Look Ahead: Rediscovering and Expanding the Foundations of Substance Use Research with Diverse Populations as we Enter a Post-Pandemic World

A Spotlight on the Chemical Senses in Times of Covid-19

Yarimar Carasquillo, PhD, Investigator, Behavioral, Neurocircuitry and Cellular Plasticity Section, Intramural Research Program, National Center for Complementary and Integrative Health, National Institutes of Health

Neural Circuits for Pain Modulation in the Amygdala

Description: While NIH is best known as a funding agency, NIH has a vibrant Intramural Research Program that offers exciting job and training opportunities in basic, clinical and translational science. The goal of this panel will be to learn about the work of 3 intramural Latina investigators who are emerging leaders in the field of substance abuse and related disorders. First, Dr. Nancy Diazgranados will discuss her work in expanding the understanding of the neurobiology of alcohol use disorders. Second, Dr. Paule Valery Joseph will discuss her clinical translational work to understand taste and smell loss with COVID-19 and implications to consummatory behaviors. Third, Dr. Yarimar Carrasquillo will discuss her work on basic neuronal mechanisms that modulate adaptive and maladaptive behavioral responses in the context of persistent pain and related affective comorbidities. Lastly, Drs. Marisela Morales and Laura O'Dell will serve as moderators to summarize major findings and open discussions regarding new avenues of research and potential collaborations with NIH intramural researchers working at the forefront of substance use research.

2:30 PM – 3:30 PM

Breakout Sessions

Session A1 – Transitioning from a Postdoc to Faculty: Grant Writing and Setting Yourself Up for Success

Chair: **Miguel Pinedo, PhD**, Assistant Professor, Department of Kinesiology & Health Education, University of Texas at Austin

Presenters: **Albert Avila, PhD**, Deputy Director, Office of Research Training, Diversity, and Disparities, National Institute on Drug Abuse

Grant Writing Tips

Marvin Diaz, PhD, Associate Professor, Department of Psychology, Binghamton University

Establishing Independent Funding as a New PI: Perspectives and Prospectives

Description: This break-out session will highlight various aspects on how to successfully transition from a postdoctoral fellow to a faculty position, including grant writing, securing funding, job market tips (e.g., job talk, negotiations), and faculty expectations (e.g., teaching, service), among other topics. The goal is to provide attendees with knowledge and tools to set themselves up for success from student to independent investigator.

Looking Back to Look Ahead: Rediscovering and Expanding the Foundations of Substance Use Research with Diverse Populations as we Enter a Post-Pandemic World

Session B1 – Staying Safe and Sane During COVID, Things We Learned and Need to Keep Doing Moving Forward

- Chair: **Erika Perez, PhD**, Assistant Professor, Xavier University of Louisiana
- Speakers: **Margarita Alegria, PhD**, Chief, Disparities Research Unit, Massachusetts General Hospital; Professor of Medicine & Psychiatry, Harvard Medical School
Alice Cepeda, PhD, Associate Professor, University of Southern California
Diego Torres Martinez, BS, Graduate Student, Vanderbilt University
- Description: This past year has brought new challenges to how we approach our work/life balance. Join us for this informal panel discussion to engage in a critical dialogue of the challenges that we have all had to and continue to encounter. Our panelist will share their unique experiences and approaches to dealing with these challenges. Together we can identify strategies to stay safe and sane during this difficult time.

3:30 PM – 4:30 PM

Breakout Sessions

Session A2 – ECLC Ask the Editor

- Chair: **Tara Bautista, PhD**, Postdoctoral Associate, Interdisciplinary Stress Center, School of Medicine, Yale University
Alejandra Jacotte-Simancas, PhD, Postdoctoral Fellow, Louisiana State University Health Sciences Center
- Presenters: **Rick Bevins, PhD**, Chancellor's Professor, Interim Associate Dean for Research, University of Nebraska
William Corbin, PhD, Professor, Arizona State University
Cherilyn Sirois, PhD, Editor, Cell Press
- Description: Students and early career scholars, do you have questions about publishing your work and finding the "right" journal for your paper? Mid-career scholars, are you interested in becoming a journal editor and want advice or need guidance about what to expect? The dissemination of research findings through academic journals is an expected activity of scholars at different stages throughout their academic career: from graduate school to full professorship. For many, the publication of their work may feel like a puzzle and an event subject to luck. Additionally, few formal opportunities exist to obtain relevant and useful in-depth insights from the perspective of the journal editors, those individuals who initially determine an article "fit" with the journal's mission and who ultimately make decisions related to manuscript acceptance. Join the ECLC for the "Ask the Editor" breakout session. This breakout session includes a group of panelists who have served as editors of scientific journals, who will provide relevant information and advice regarding the different stages of the editorial process of peer-reviewed articles. This session will address the most common concerns raised by authors and will provide ample opportunities for informal dialog between the editors and the audience. The session will also focus on considerations when submitting articles to journals aimed at increasing diversity, targeting Latino/Hispanic health, and/or drug abuse.

Looking Back to Look Ahead: Rediscovering and Expanding the Foundations of Substance Use Research with Diverse Populations as we Enter a Post-Pandemic World

Session B2 – Neuroscience Datablitz

Co-Chairs: **Sergio Iniguez, PhD**, Associate Professor, The University of Texas at El Paso
Arturo Zavala, PhD, Professor, California State University, Long Beach

Speakers: **Ana Garcia**, Undergraduate Student, California State University, Long Beach
Blocking Serotonin 2a Receptors Attenuates the Acquisition of Methamphetamine-Induced Conditioned Place Preference in Adult Female Rats

Gizelle Verduzco, Undergraduate Student, California State University, Long Beach

Neonatal Caffeine Administration on the Behavioral Sensitization to Methylphenidate (Ritalin): Implications for ADHD

Hannah Ponce, Undergraduate Student, California State University, Dominguez Hills

Chronic Administration of Ethanol and the Brain: A Role for DeltaFosB

Claudia Aguirre, MA, Graduate Student, University of California, Los Angeles
Dissociable Roles of BLA and OFC: Behavioral and Neural Basis of Flexible Reward Learning

Veronika Espinoza, BS, Graduate Student, The University of Texas at El Paso
Female Rats Display Greater Nicotine Withdrawal-Induced Cellular Activation of a Central Portion of the Interpeduncular Nucleus Versus Males

Andrea Pantoja Urban, Graduate Student, McGill University
Enduring Consequences of Social Stress in Adolescence in Male and Female Mice

Tiffany Rodriguez, BS, Graduate Student, The City University of New York
Febrile-Induced Seizures During Infancy Promotes Synaptic Instability in Dorsal Hippocampus in Adulthood

Rodolfo Flores, PhD, Postdoctoral Researcher, National Institute of Mental Health

Examination of Kappa-Opioid Receptor Dynamics During Acute Stress Rests in Mice

Description: This breakout session will offer basic scientists the opportunity to share their exciting discoveries in the field of neuroscience that expand our understanding of the brain, and of drug abuse and addiction. The goals of this breakout session are to highlight the latest work of basic scientists with the NHSN community; to provide an opportunity for discussion with other scientists with similar interests; and to facilitate the development of collaborations among NHSN members.

4:30 PM – 5:30 PM

Poster Session

Co-Chairs: **Angel Algarin, PhD, MPH**, T32 Postdoctoral Fellow, University of California, San Diego

Tiffany Gonzalez, BA, Graduate Student, California State University, Long Beach

Tyler Nelson, Undergraduate Student, California State University, Long Beach

Daisy Ramirez-Ortiz, PhD, Postdoctoral Associate, Florida International University

Description: Each poster presenter has pre-recorded their presentation. Each presentation video and abstract are posted on the NHSN website (see link below). We ask that everyone watch the presentations prior to the meeting date. During this one-hour

Looking Back to Look Ahead: Rediscovering and Expanding the Foundations of Substance Use Research with Diverse Populations as we Enter a Post-Pandemic World

poster session, poster presenters will join breakout rooms in small groups where attendees can visit to ask questions.

Abstracts &

Presentations: https://www.the-nhsn.org/Conference/2021_poster_session.aspx

See page 15 for list of today's presenters.

Friday, September 24, 2021

All time listed are Central Standard Time Zone

9:00 AM – 10:30 AM

New Investigators in Drug Abuse Research

Co-Chairs: **Danielle Levitt, PhD**, Postdoctoral Fellow, Department of Physiology, Louisiana State University Health Sciences Center New Orleans

Alejandra Fernandez, PhD, Assistant Professor, UT Health School of Public Health Dallas

Presenters: **Israel Garcia Carachure, MA**, Graduate Student, The University of Texas at El Paso

Lasting Effects of Concomitant Exposure to Ketamine and Social Stress Spatial Memory Performance in Male C57BL/6 Mice

Christie Leanne Kirchoff, MS, Doctoral Candidate, Florida International University

Characteristics, Attitudes, and Experiences Associated with COVID-19 Vaccine Acceptance Among Latinx Immigrants in South Florida

Maritza Leon Cartagena, BS, Graduate Student, Oklahoma State University
Fear of Deportation, Stress and Hispanic Early Adolescents' Substance Use: Hope as a Moderator

Diego Torres Martinez, BS, Graduate Student, Vanderbilt University
Chronic Binge Alcohol and Ovariectomy Decrease the Expression of Insulin Release Genes in Simian Immunodeficiency Virus Infected Female Macaques

10:45 – 11:45AM

Plenary Presentation

Presenter: **Cherilyn Sirois, PhD**, Editor, Cell Press

12:00 – 1:30PM

Scientific Session: Taking a Closer Look at COVID-19 and Its Toll on the Nervous System

Co-Chairs: **Monica Goncalves-Garcia, BM**, Graduate Student, University of New Mexico

Caroline Palavicino-Maggio, PhD, Postdoctoral Fellow, Department of Neurobiology, Harvard Medical School

Presenters: **Sandeep Robert Datta, MD, PhD**, Associate Professor, Harvard Medical School
How COVID-19 Steals Your Sense of Smell

Nora Hernandez, MBA, Manager, University of Texas at El Paso

Looking Back to Look Ahead: Rediscovering and Expanding the Foundations of Substance Use Research with Diverse Populations as we Enter a Post-Pandemic World

Cultivating a Culture of Care: COVID-19 Resiliency Among Food Production Workers

Kerry Ressler, MD, PhD, Professor of Psychiatry, Harvard Medical School
Neuroscience, Stress, Trauma, and Substance Use in the Time of COVID-19

Description: The immediate effects of severe acute respiratory syndrome coronavirus 2 (SARS-CoV-2 virus), which causes COVID-19 illness, on the nervous system include headaches, dizziness, fatigue, confusion, seizures, stroke, altered taste and smell. Recent developments also suggest that persons with a history of infection may be at higher risk for developing severe neurological and/or psychiatric comorbidities. Some examples include higher rates of Guillain-Barré syndrome (which affects nerves), transverse myelitis (which affects the spinal cord), acute necrotizing leukoencephalopathy, dementia, and other anxiety-related disorders. The emergence of these disorders and their biological consequences may induce greater susceptibility to drug and alcohol abuse, an issue that will also be addressed by our panelists who are working on providing a better understanding of the complex interaction between the COVID-19 illness and subsequent vulnerabilities to a host of diseases, including greater drug use.

1:30 PM – 2:00PM

Awards Ceremony and Closing

Looking Back to Look Ahead: Rediscovering and Expanding the Foundations of Substance Use
Research with Diverse Populations as we Enter a Post-Pandemic World

Poster Session Schedule

Wednesday, September 22, 2021 4:30-5:30pm (CST)

Poster Presenters

Alamilla, Saul

Examining the Feasibility of an Integrated Data Analysis of Psychosocial Drivers of General Decline - Immigrant Paradox (IP)-vis-à-vis Alcohol Use.

Cardona- Acosta, Astrid

Alprazolam Exposure During Adolescence Dysregulates Reward Sensitivity and Second Messenger Signaling Within the VTA-NAC Pathway

Cruz, Adelis

Monosynaptic Retrograde Tracing From Prelimbic Neuron Subpopulations Projecting to Either Nucleus Accumbens Core or Rostromedial Tegmental Nucleus

Frankeberger, Jessica

Racial/Ethnic Differences in Delivery and Postpartum Hospital Admissions Among Women with Opioid Use Disorder

Hai, Audrey

Abstention and Binge Drinking: The Intersections of Language and Gender Among Hispanic Adults in a National Sample, 2002-2018

Hernandez, Mercedes

The Relationships of Discrimination, Acculturative Stress, and Psychological Distress on Alcohol Problems Among Latina Adults with Risky Alcohol Use

Horta, Marilyn

Social Support and Alcohol Use Among Older Adults in the United States and Canada During the Covid-19 Pandemic

Jacotte-Simancas, Alejandra

Sex Differences in BLA Neuron Activation and Excitability Following Traumatic Brain Injury

Jaramillo, Anel

Parabrachial Nucleus Activity Associates with Stress-Induced Changes in Bed Nucleus of the Stria Terminalis and Anxiety in Abstinence

Lozano, Alyssa

Reliability and Measurement in Variance of the Cultural Attitudes Toward Healthcare and Mental Illness Questionnaire Among Latino Sexual Minority Men

Nelson, Tyler

Adolescent Male and Female Sprague-Dawley Rats Exhibit Dose-Dependent Differences in the Preference for Ethanol

Looking Back to Look Ahead: Rediscovering and Expanding the Foundations of Substance Use

Ortegon, Sebastian

High-Fat Feeding Induces Insulin Resistance and a Greater Enhancement of the Reinforcing Effects of Nicotine in Female Versus Male Rats

Ramirez-Ortiz, Daisy

Pre- and Post-Immigration HIV Testing Behaviors Among Young Adult Recent Latino Immigrants in Miami-Dade County, Florida

Reyna, Nicole

Methamphetamine and Social Rewards Interact to Produce Enhanced Conditioned Place Preference in Male Adolescent Rats

Rivera-Quiles, Cristina

Chronic Morphine Increases Expression of the Neuropeptide NMS in Ventral Tegmental Area Dopamine Neurons

Sahbaz, Sumeyra

Latino Immigrant Shared Language Erosion and Youth Emotional and Behavioral Dyscontrol: Parent-Youth Conflict as a Mediator

Sanchez, Lilliana

The Role of Hippocampal CA3 and Dentate Gyrus in Object-Place Paired-Associate Learning Deficits After Moderate Prenatal Alcohol Exposure

Shrader, Cho Hee

The Influences of Discrimination Stress on Latino MSM Movement in the Motivational Prep Cascade in South Florida: A Cross-Sectional Study

Vazquez, Vicky

Depressive Symptoms Among Recent Latinx Immigrants in Southern Florida: The Role of Pre-Migration Trauma/Stress, Post-Immigration Street, and Gender

Looking Back to Look Ahead: Rediscovering and Expanding the Foundations of Substance Use

Thursday, September 23, 2021 4:30-5:30pm (CST)

Poster Presenters

Arredondo-Lopez, Alma

Latino Immigrant Family Language Erosion and Youth Substance Use Attitude: Parent-Youth Conflict as a Mediator

Barbano, Flavia

The Ventral Tegmental Area (VTA) Has Glutamatergic Neurons That Play a Role in Cocaine Seeking Behavior

Cardoso, Ernesto

Chronic Exposure to Methamphetamine During Adolescence Results in Physiological and Behavioral Dysregulation

Espinoza, Veronika

Female Rats Display Greater Nicotine Withdrawal-Induced Cellular Activation of a Central Portion of the Interpeduncular Nucleus Versus Males

Garcia, Valeria

A Proposed Mechanism for Stimulant-Induced Behavioral Sensitization Involving the Transporter Vmat

Giner, Priscilla

Short-Term Increases in Risky Choice Following Nicotine Vapor Exposure in Rats

Gonzalez, Tiffany

Zolmitriptan Administration Prevents the Acquisition of Nicotine Preference in Male and Female Adolescent Rats

Guerrero, Erick

Gender Disparities in Opioid Treatment: Exploring Counseling and Methadone Settings

Hernandez, Maribel

Developmental Lead Exposure Increases the Acute Locomotor Response to Ethanol and Sensitivity to Cocaine-Induced Locomotor Sensitization in Adulthood

Ibanez, Gladys

Acting with Awareness Moderates the Association Between Interpersonal Trauma and Craving Among Women in Residential Substance Use Treatment

Miranda-Barrientos, Jorge

The Dorsal Raphe Has Glutamatergic Neurons Whole Neuronal Activity is Regulated by Corticotropin Releasing Factor

Looking Back to Look Ahead: Rediscovering and Expanding the Foundations of Substance Use

Nowotny, Kathryn

Syndemic Profiles for Infectious Diseases Among Latina Women Formerly Affiliated with Youth Gangs

Penn, Alvonee

Covid-19 and Latinx Immigrants in South Florida; Impacts on Daily Life, Coping and Vaccine Hesitancy

Ramirez, Esmeralda

Correlates of Drug Patterns Among Marginalized Latina Women: A Latent Class Analysis

Rincon-Guerra, Nefertari

Substance Use Patterns Among Floating Immigrant Population

Rivera, Dean

Examination of Referral Source and Discharge Outcomes Among Women in Residential Substance Use Disorder Treatment

Themann, Anapaula

Adolescent Fluoxetine Exposure Induces Persistent Gene Expression Changes in the Hippocampus of Adult Male C57BL/6 Mice

Vazquez, Vicky

Alcohol Use Severity Among Recent Latinx Immigrants: The Role of Stress, Trauma, and Gender

Looking Back to Look Ahead: Rediscovering and Expanding the Foundations of Substance Use Research with Diverse Populations as we Enter a Post-Pandemic World

Biographies



Lucas Albrechet-Souza, PhD

Dr. Lucas Albrechet-Souza is an Instructor-Researcher currently working in the laboratory of Dr. Nicholas Gilpin in the Department of Physiology at the Louisiana State University Health Sciences Center in New Orleans. His research focuses on understanding how alcohol and stress promote changes in brain mechanisms to drive adverse behavioral outcomes associated with alcohol use disorders and anxiety/stress-related neuropsychiatric diseases in a subset of susceptible individuals, using rodent models. During his graduate and postdoctoral training at the University of Sao Paulo-Brazil, he focused on neurobiological processes involved in anxiety disorders before moving to Tufts University where he continued researching neuroadaptive changes in the reward system function induced by social stress in rodents. His research interest aims to translate the knowledge of the neurobiological mechanisms underlying alcohol use disorders and stress-related neuropsychiatric diseases into innovative therapeutic strategies.



Margarita Alegria, PhD

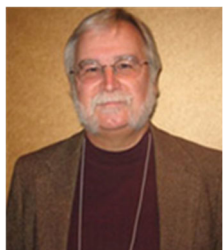
Dr. Margarita Alegria is the Chief of the Disparities Research Unit at Massachusetts General Hospital and the Mongan Institute, the Harry G. Lehnert, Jr. and Lucille F. Cyr Lehnert Endowed Chair at the Mass General Research Institute, and a Professor in the Departments of Medicine and Psychiatry at Harvard Medical School. Her research focuses on the improvement of health care services delivery for diverse racial/ethnic populations, conceptual and methodological issues with multicultural populations, and ways to bring the community's perspective into the design and implementation of health services. She is currently the Principal Investigator (PI) of four NIH-funded research studies: The Impact of Medicaid Plans on Access to and Quality of Substance Use Disorder (SUD) Treatment, Building Infrastructure for Community Capacity in Accelerating Integrated Care, Building Community Capacity for Disability Prevention for Minority Elders and Latino Youths Coping with Discrimination: A Multi-Level Investigation in Micro- and Macro- Time. Dr. Alegria has published over 300 papers, editorials, intervention training manuals, and several book chapters. She earned her B.A. in Psychology from Georgetown University in 1978 and her Ph.D. from Temple University in 1989.

Looking Back to Look Ahead: Rediscovering and Expanding the Foundations of Substance Use Research with Diverse Populations as we Enter a Post-Pandemic World



Angel Algarin, PhD, MPH

As a gay, Latino scholar, I am committed to addressing health disparities that uniquely affect my community, particularly HIV and substance use. Seeing how stigma/discrimination disproportionately affects my Hispanic and sexual and gender minority community inspires me to find ways to dispel stigma through research and intervention. I also hope that my experienced as a gay, Latino scholar can help inspire other students with similar stories to keep pushing forward in finding and achieving their success.



James C. (Jim) Anthony, PhD

Jim Anthony is a Professor of Epidemiology & Biostatistics at the Michigan State University College of Human Medicine, a regular participant in NHSN activities for more than 15 years, and a Member of the NHSN Steering Committee for more than 10 years. Jim welcomes NHSN-affiliated graduate students, postdoctoral fellows, and early-stage NIH investigators to become program participants in his MSU-based NIDA epidemiology and public health research science education program, which offers online courses for skills development and research experiences (email: r25.researchproject@gmail.com) or in the NSHN's USC-based eIRTI mentoring initiative (<http://www.irtiusc.org/>). These initiatives are sustained by active NIDA R25 awards in addition to university support.



Judith Arroyo, PhD

Dr. Judith (Judy) Arroyo is Special Assistant to the Director of the National Institute on Minority Health and Health Disparities, Dr. Eliseo J. Pérez-Stable. At NIMHD she will work to expand research on the health of underrepresented peoples and their leading funded research.

Dr. Arroyo joined the National Institutes of Health in 2002 where, prior to joining NIMHD, she was coordinator for Minority Health and Health Disparities research for the National Institute on Alcohol Abuse and Alcoholism (NIAAA). Her lifetime goals have been to enhance the quality and quantity of minority research efforts and the diversity of the investigators. For her work mentoring and training diverse investigators and expanding the research focus to include minorities, she has received numerous awards, including an American Psychological Association (APA) Early Career mentoring/training award, NIH Directors' Awards, and more recently lifetime achievement awards from the Research Society on Alcoholism, the APA Addictions Division, and the National Hispanic Science Network.

Looking Back to Look Ahead: Rediscovering and Expanding the Foundations of Substance Use Research with Diverse Populations as we Enter a Post-Pandemic World

Dr. Arroyo received her Ph.D. in Clinical Psychology from UCLA. She served on the faculty of the University of New Mexico (UNM) researching bias in Hispanic mental health treatment before moving to the UNM Center on Alcohol, Substance Abuse, and Addictions to devote herself full time to research on Hispanic alcoholism.



Albert Avila, PhD

Dr. Albert Avila is the Director of the Office of Diversity and Health Disparities (ODHD) within the National Institute on Drug Abuse (NIDA). There, he leads and develops the diversity and health disparities capacity building efforts for NIDA and provides guidance to the NIDA Director on related initiatives. His primary goal for the NIDA ODHD is to enhance the number of underrepresented scientists conducting substance abuse and addiction research and securing independent grant support. Dr. Avila received his doctorate in pharmacology from Georgetown University during which he investigated the effects of cocaine, withdrawal, and stress on the neuroimmune response. Following his postdoctoral training in pain neurotransmission at the National Institute of Dental and Craniofacial Research (NIDCR), he became an Intramural Training Director, leading programs for pre- and post-doctoral trainees, and subsequently a Health Scientist Administrator at NIDCR managing extramural research training and career development research programs. Prior to leading the ODHD, he served as a Program Official in the Division of Neuroscience and Behavior at NIDA and managed a grant portfolio in the areas of neuroimmunology, psychopharmacology, HIV and research training as they relate to drug abuse.



Tara Bautista, PhD

Dr. Tara Bautista is a Postdoctoral Fellow at the Yale Stress Center in the School of Medicine at Yale University. She holds a Ph.D. in Nursing and Healthcare Innovation from Arizona State University and bachelor's degree in Psychology from San Diego State University. Dr. Bautista studies stress and chronic disease, and interventions for vulnerable populations.



Rick Bevins, PhD

Dr. Rick Bevins, Chancellor's Professor of Psychology at the University of Nebraska-Lincoln, serves as Director of the Rural Drug Addiction Research Center of Biomedical Research Excellence (COBRE) and is the Interim Associate Vice Chancellor for Research. He is the Behavioral Pharmacology and Neuroscience Editor for the *Journal of the Experimental Analysis of Behavior* as well as Motivated Behavior Section Editor for *Pharmacology, Biochemistry and Behavior*.

Looking Back to Look Ahead: Rediscovering and Expanding the Foundations of Substance Use Research with Diverse Populations as we Enter a Post-Pandemic World



Yarimar Carrasquillo, PhD

Dr. Yarimar Carrasquillo received her B.S. in Biology from the University of Puerto Rico, Rio Piedras and her Ph.D. in Neuroscience from Baylor College of Medicine, followed by postdoctoral training in cellular neurophysiology at Washington University School of Medicine. Her graduate work established a causal link between amygdala plasticity and changes in persistent pain-related behaviors. Her postdoctoral studies contributed to the molecular and functional characterization of voltage-gated potassium and sodium currents in central neurons. Dr. Carrasquillo joined the National Institutes of Health (NIH) as a Principal Investigator in 2014. Her research program is focused on understanding the neural mechanisms underlying bidirectional control of pain in the brain. Dr. Carrasquillo is also strongly committed to and invested in fostering the career development of students and trainees of all backgrounds, particularly underrepresented minorities, trainees with underprivileged and disadvantageous backgrounds and women in science. She is also strongly committed to promoting scientific rigor, transparency and reproducibility in research and in training scientists that understand, value and exercise scientific integrity throughout their work.



Franklin Carrero-Martinez, PhD

Dr. Franklin Carrero-Martínez holds a Ph.D. in Cell and Developmental Neurobiology and a Certificate in Business Administration from the University of Illinois at Urbana-Champaign. His multidisciplinary career includes roles as researcher and educator, science administrator, and science diplomat in government, academia and NGOs. In academia, Franklin established a strong research program aimed at understanding the brain's self-organization principles and how to use that knowledge to manipulate brain connectivity. His successful career at the University of Puerto Rico included tenure, promotion to Associate Professor, visiting scholarship to Duke, sabbatical at MIT's Brain Institute, community service and outreach, invention disclosures, curricular reform and awards recognizing his innovative approaches to science education for underserved populations. In 2012, he transitioned to government service as the American Association for the Advancement of Science Roger Revelle Fellow in Global Stewardship. He served this prestigious distinction with a joint appointment between the Department of State's Office of the Science and Technology Adviser (STAS) and NASEM. He later joined STAS and was posted to the U.S. Embassy in Mexico City as acting Science Counselor before moving to the National Science Foundation Office of International Science and Engineering in 2014. Franklin returned to STAS in 2016, and during this time he directed the office and served as the Department's senior advisor on science, technology and innovation. In

Looking Back to Look Ahead: Rediscovering and Expanding the Foundations of Substance Use Research with Diverse Populations as we Enter a Post-Pandemic World

2018, he joined NASEM where he directs the Global Policy and Development and the Science and Technology for Sustainability Programs at the National Academies of Science, Engineering and Medicine (NASEM).



Alice Cepeda, PhD

Alice Cepeda is currently Associate Professor in the School of Social Work at the University of Southern California. She received her PhD in Sociology from the City University of New York, Graduate Center. Her research examines the complex of social determinants that influence drug abuse health disparities across generations of Mexican-origin populations. Dr. Cepeda has been a recipient of several National Institutes of Health federal grants. Her most recent National Institute on Minority Health and Health Disparities funded study focused on disparities of health among floating immigrant populations in Mexico City and Los Angeles.



Irma Cisneros, PhD

Dr. Irma (Lisa) Cisneros is an Assistant Professor in the Department of Pathology and the Center for Addiction Research at the University of Texas Medical Branch (UTMB). She earned her BS in Biology at the University of Texas at Brownsville, PhD in Cellular Neuroimmune Pharmacology at the University of North Texas Health Sciences Center, and completed a Postdoc in Addiction Research and Neuroinfectious Disease at UTMB. The overarching goal of the Cisneros Lab is to understand the mechanisms dictating interactions between the immune and nervous systems during substance use disorders and neuroinfectious diseases. Dr. Cisneros has been the recipient of many honors and awards including a recently funded R01 from NIDA to study the impact of mitochondrial antiviral signaling protein (MAVS) signaling in cocaine- and HIV-1-induced neuroinflammation.



Kizzmekia Corbett, PhD

Dr. Kizzmekia S. Corbett is an assistant professor of immunology and infectious diseases at Harvard's T.H. Chan School of Public Health, Shutter Assistant Professor at Harvard's Radcliff Institute of Advanced Study, and Associate Member of the Phillip T. and Susan M. Ragon Institute. In 2008, she received a BS in Biological Sciences, with a secondary major in Sociology, from the University of Maryland – Baltimore County, where she was a Meyerhoff Scholar and NIH undergraduate scholar. She then obtained her PhD in Microbiology and Immunology in 2014 from the University of North Carolina at Chapel Hill holding multiple honors, including a director's scholarship. Prior to Harvard, she was a research fellow and scientific lead at the National Institute of Allergy and Infectious Diseases Vaccine Research Center. Dr. Corbett uses her viral immunology

Looking Back to Look Ahead: Rediscovering and Expanding the Foundations of Substance Use Research with Diverse Populations as we Enter a Post-Pandemic World

expertise to propel novel vaccine development for pandemic preparedness, including mRNA-1273, a leading vaccine against SARS-CoV-2. The vaccine concept incorporated in mRNA-1273 was designed by Dr. Corbett's NIH team from viral sequence and rapidly deployed to industry partner, Moderna, Inc., for Phase 1 clinical trial, which unprecedentedly began only 66 days from viral sequence release. mRNA-1273 was shown to be 94.1% effective in Phase 3 trial and is authorized for use in multiple countries. Alongside mRNA-1273, Dr. Corbett boasts a patent portfolio which also includes universal coronavirus and influenza vaccine concepts and novel therapeutic antibodies. In all, she has over 15 years of experience studying dengue virus, respiratory syncytial virus, influenza virus, and coronaviruses, garnering several prestigious awards, such as the Benjamin Franklin Next Gen Award and the Salzman Memorial Award in Virology. Combining her research goals with her knack for mentorship, Dr. Corbett invests much of her time in underserved communities as an advocate of STEM education and vaccine awareness.



William Corbin, PhD

Dr. William Corbin is Professor and Director of Graduate Studies in the Department of Psychology at Arizona State University where he has been on the faculty since 2009. His federally funded program of research utilizes basic experimental and longitudinal survey research to inform the development of both behavioral and pharmacological prevention/intervention approaches to reduce harms associated with substance use and other risk behaviors. He is currently working on an NIAAA funded prevention study designed to reduce heavy drinking, risky sex, and sexual aggression among high-risk college men. He has over 100 published journal articles, and dozens of books, and book chapters in the area of addictive behaviors. Dr. Corbin is currently a Field Editor for the *Journal of Studies on Alcohol and Drugs*, and an Associate Editor for *Psychology of Addictive Behaviors*.



Sandeep Robert Datta, MD, PhD

Sandeep Robert Datta obtained a Bachelor of Science degree in Molecular Biochemistry and Biophysics from Yale University in 1993, and obtained an M.D./Ph.D degree from Harvard University in 2004. After working as a postdoctoral fellow at Columbia University, he joined the Harvard Medical School Department of Neurobiology in 2009. His lab focuses on understanding how sensory cues — particularly odors — are detected by the nervous system, and how the brain uses information about the presence of salient sensory cues to compose complex patterns of motivated action on a moment-to-moment basis. Dr. Datta is an Associate Member of the Broad Institute, and is a Principal Investigator in the Italian

Looking Back to Look Ahead: Rediscovering and Expanding the Foundations of Substance Use Research with Diverse Populations as we Enter a Post-Pandemic World

Institute of Technology/Harvard Medical School joint program in the neurosciences. Dr. Datta has received the NIH New Innovator Award, the Burroughs Wellcome Career Award in the Medical Sciences, the Alfred P. Sloan Research Fellowship, the Searle Scholars Award, the Vallee Young Investigator Award, the McKnight Endowment Fund Scholar Award and has been named a fellow of the National Academy of Science/Kavli Scholars program. In addition, Dr. Datta is a cofounder of Optogenix (which manufactures biocompatible optical fibers for recording/manipulation of the brain), Syllable Life Sciences (which has developed an advanced behavioral phenotyping platform for drug development) and Abelian Therapeutics (which is developing novel treatments for neurodegenerative disorders).



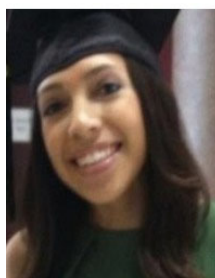
Marvin Diaz, PhD

Dr. Marvin R. Diaz is an Associate Professor within the Behavioral Neuroscience area in the Psychology Department at Binghamton University. He received his PhD at Wake Forest University School of Medicine (2009) and completed a postdoctoral fellowship at the University of New Mexico Health Science Center. His research focuses on determining neurodevelopmental adaptations and how alcohol, drug, and stress exposures during development periods (prenatal through adolescence) alter neural mechanisms. He has been funded through the National Institute on Alcohol Abuse and Alcoholism (NIAAA) throughout his career.



Nancy Diazgranados, MD, MS

Dr. Diazgranados studied medicine at the Pontificia Universidad Javeriana. Seeking a career as physician-scientist she trained in psychiatry at Albert Einstein Medical Center combined with a master's in Pharmacology with at Thomas Jefferson University. After this, she joined NIMH as a Clinical Research Fellow in experimental therapeutics in the Mood and Anxiety Disorders Program. After her fellowship she joined University of Texas Health Science Center at San Antonio before relocating to Maryland. In 2013 she joined NIAAA where she has been the Deputy Clinical Director since 2014.



Alejandra Fernandez, PhD

Alejandra Fernandez, PhD is an Assistant Professor at UTHealth School of Public Health in Dallas and is part of the Center for Pediatric Population Health. Alejandra completed a Post-Doctoral Associate position in 2021 at the University of Miami, School of Nursing and Health Studies under the supervision of Dr. Guillermo (Willy) Prado. The position was funded via a diversity supplement by the National Institute on Drug Abuse (NIDA). Alejandra's research primarily focuses on the influence of family

Looking Back to Look Ahead: Rediscovering and Expanding the Foundations of Substance Use Research with Diverse Populations as we Enter a Post-Pandemic World

functioning behaviors on Hispanic adolescent health behaviors, including substance use, sexual risk behaviors, mental health, and obesity.



Debra Furr-Holden, PhD

Dr. Debra Furr-Holden is the Associate Dean for Public Health Integration, C.S. Mott Endowed Professor of Public Health, and Director of the Division of Public Health at the Michigan State University. She is also the Director of the Flint Center for Health Equity Solutions, funded by the National Institute on Minority Health and Health Disparities (U54HD011227). She is an epidemiologist and classically-trained public health professional with expertise in behavioral health equity and health disparities research. Dr. Furr-Holden has worked extensively with a wide range of partners including community-based organizations, local municipal officials, and national policy makers and leaders on community-driven and structural interventions to prevent and reduce substance abuse and associated harms. Her research has supported legislative efforts to impact state- and national-level legislation to promote health equity, including community availability of medication assisted substance abuse treatment. Dr. Furr-Holden's community-based, action-oriented research has been well received by community stakeholders and driven multiple policy interventions to address some of the nation's greatest public health challenges, especially among racial and ethnic minorities and in racially- and economically-segregated communities. Dr. Furr-Holden's research is grounded in the rubrics of epidemiology and consistent with principles and practices for understanding and intervening on the social determinants of health and health equity. Among her many awards, she was the recipient of the 2006 Presidential Early Career Award for Scientists and Engineers (Office of the White House). Dr. Furr-Holden attended the Johns Hopkins University Krieger School of Arts and Sciences (BA Natural Sciences and Public Health, 1996) and Johns Hopkins Bloomberg School of Public Health (PhD, 1999).



Monica Goncalves-Garcia, PhD

Monica Goncalves-Garcia is originally from Sao Paulo – Brazil. She is currently a 3rd-year Ph.D. student in Psychology in the Neuroscience concentration, at the University of New Mexico. Her research interests include learning and memory, synaptic plasticity, and prenatal alcohol exposure. Her current research aims to understand the impacts of prenatal alcohol exposure on behavior and brain functions. Monica is investigating synaptic plasticity in a rat model of prenatal alcohol exposure using *in vivo* electrophysiology techniques. She has a bachelor's degree from the University of New Mexico with double-major in Music-String Pedagogy and Psychology.

Looking Back to Look Ahead: Rediscovering and Expanding the Foundations of Substance Use Research with Diverse Populations as we Enter a Post-Pandemic World



Felipe Gonzales-Castro, PhD

Felipe Castro is a professor and Southwest Borderlands Scholar in the College of Nursing and Health Innovation at Arizona State University. He is also a member of the Center for Health Promotion and Disease Prevention at ASU.

His research interests include health promotion and relapse prevention in Hispanic populations, with a focus on motivational aspects in the prevention of HIV infection, drug abuse, cancer, diabetes mellitus, and other chronic degenerative diseases.

Prior to joining ASU in 2015, he was a professor of psychology with the University of Texas in El Paso and the head of the Health Psychology Program and senior advisor to the provost for engage health disparities scholarship. He's also held positions previously at Arizona State University, San Diego State University, University of California-Los Angeles.



Tiffany Gonzalez, BA

Tiffany Gonzalez is a graduate student in the Master of Arts – Option in Psychological Research (M.A.P.R.) program at California State University, Long Beach (CSULB). She is a graduate research assistant to Dr. Arturo Zavala of the psychology department at CSULB. Her research interests include identifying neural targets for pharmacological intervention in an effort to treat drug addiction. Her current research investigates the role of serotonin receptor activation in nicotine and methamphetamine reward. Tiffany also serves as a mentor to undergraduate researchers as part of the NIH-funded CSULB BUilding Infrastructure Leading to Diversity (BUILD) program. She recently earned distinction as a Sally Casanova Pre-Doctoral Scholar. Her career goals include earning a Ph.D. in neuroscience and working as a faculty mentor and principal investigator in an academic setting.



Nora Hernandez, MBA

Nora has been involved in public health for 15 years. She received a Bachelor's in Biology and a Master's in Business Administration from The University of Texas at El Paso. In 2017, Nora was certified in Public Health by the Board of Public Health Examiners and selected as a Population Health Scholar by Academy Health, making her one of only ten health leaders nationwide recognized with this honor.

Nora's work in tobacco control includes, launching regional media campaigns promoting prevention and cessation, and policy focusing on tobacco-free campuses and clean indoor/outdoor air ordinances. Currently, she is working on mitigating the impact of COVID-19 among

Looking Back to Look Ahead: Rediscovering and Expanding the Foundations of Substance Use Research with Diverse Populations as we Enter a Post-Pandemic World

farmworkers, dairy and meat packing workers. Nora finds it rewarding being engaged in the community therefore serves on the board of directors of the Crime Stoppers of El Paso, Inc. and is a Girl Scouts troop leader to eleven active, inquisitive, and creative girls.



Sergio Iniguez, PhD

Sergio Iñiguez, Ph.D., is an Associate Professor in the Department of Psychology at The University of Texas at El Paso (UTEP). Dr. Iñiguez completed his bachelor's and master's degrees in psychology at California State University San Bernardino before completing the doctoral program in neuroscience at Florida State University. He joined the faculty at UTEP in 2016 where he has established a behavioral neuroscience laboratory that examines, at the preclinical level, how early-life exposure to psychotropic drugs and/or social stressors influence responses to mood-, addiction-, and memory-related behaviors in adulthood. Currently, NIGMS (National Institute of General Medical Sciences) financially support the research projects in his laboratory.



Alejandra Jacotte-Simancas, PhD

Dr. Jacotte-Simancas received her Ph.D. in Neuroscience from Universidad Autónoma de Barcelona, Spain where she studied the effect of voluntary physical exercise and citicoline on reducing cognitive deficits following traumatic brain injury (TBI). Currently, her research is focused on elucidating the neurobiological mechanisms that underlying post-TBI escalation of alcohol consumption and anxiety-like behavior using different approaches such as behavioral analysis, electrophysiology, circuit-based manipulations, and site-specific neuropharmacology.

Her long-term research interest includes examining the effectiveness of physical exercise to reduce different comorbidities associated with TBI specifically pain and substance use disorder and elucidate the underlying mechanisms.



Paule Valery Joseph, PhD, MS, FNP-BS, RN, CTI

Dr. Paule V. Joseph is a 2019 Lasker Scholar and National Institutes of Health (NIH) Distinguished Scholar. She is Chief of the Section of Sensory Science and Metabolism (SenSMet) in Division of Intramural Clinical and Biological Research (DICBR) at the National Institute on Alcohol Abuse and Alcoholism (NIAAA) with a dual appointment at National Institute of Nursing Research (NINR). Prior to her tenure track position, she was an Assistant Clinical Investigator at NINR. Dr. Joseph received an AAS in Nursing at Hostos Community College, a BSN from the College of New Rochelle, and a Master of Science with a specialty as a Family Nurse Practitioner from Pace University. She completed her PhD from the

Looking Back to Look Ahead: Rediscovering and Expanding the Foundations of Substance Use Research with Diverse Populations as we Enter a Post-Pandemic World

University of Pennsylvania and conducted her PhD work at the Monell Chemical Senses Center. She then completed a Clinical and Translational Postdoctoral Fellowship at the NINR supported by the Office of Workforce Diversity. Her laboratory aims to understand neurological and molecular mechanisms underlying chemosensation (taste, smell & chemesthesis) and motivational pathways of ingestive behaviors how they might be different in individuals with obesity and alcohol and substance use disorders. Besides, due to reports of taste and smell loss from individuals affected by COVID-19, they began investigating chemosensation and COVID-19. We are focused on understanding the effects of the SARS-CoV-2 virus on the chemical senses. Dr. Joseph has received several awards, including the highly competitive Ajinomoto Award for Young Investigators in Gustation, the Johnson & Johnson- American Association of Colleges of Nursing's Minority Nurse Faculty Scholarship, the Rockefeller University Heilbrunn Nurse Scholar Award. Last year she was selected by the National Minority Quality Forum (NMQF) as one of 2020's 40 Under 40 Leaders in Minority Health and National Association of Hispanic Nurses 40 under 40 award winner. She is a fellow of the American Academy of Nursing, a Fellow of the New York Academy of Medicine, and a Fellow of the Transcultural Nursing Society.



Danielle Levitt-Budnar, PhD

Danielle Levitt, PhD, is currently a Postdoctoral Fellow in the Department of Physiology at Louisiana State University Health Sciences Center, New Orleans, under the mentorship of Drs. Patricia Molina and Liz Simon. She earned her BA in Psychology from the University of Texas at Dallas, MS in Kinesiology from the University of North Texas, and PhD in Biology/Exercise Physiology from the University of North Texas. Her long-term research goals are to determine mechanisms by which alcohol and substance use contribute to metabolic dysfunction in health and disease and to identify interventions, such as exercise, nutritional, and therapeutic strategies, to improve metabolic outcomes. Her work is currently funded by an individual fellowship award from the National Institute on Alcohol Abuse and Alcoholism.



Wanda Lipscomb, PhD

Wanda D Lipscomb, PhD, is the Senior Associate Dean for Diversity and Inclusion and the Associate Dean for Student Affairs at the Michigan State University College of Human Medicine. She is Associate Professor of Psychiatry and the Director of the Advanced Baccalaureate Learning Experience (ABLE) Program, a conditional admissions post-baccalaureate program that has provides the educational pathway for students from

Looking Back to Look Ahead: Rediscovering and Expanding the Foundations of Substance Use Research with Diverse Populations as we Enter a Post-Pandemic World

underrepresented minority and disadvantaged backgrounds to enter and complete medical school.

Dr. Lipscomb served as the Interim Special Adviser to the President for Diversity at Michigan State University in 2020. She is the current Co-Chair of the MSU Diversity Equity and Inclusion Steering Committee charged with the development of a strategic university framework that broadly addresses diversity. Dr. Lipscomb is also a member of the University Strategic Planning Committee. She is a college co-representative to the university consortium of Faculty Excellence Advocates.

Dr. Lipscomb has been the successful Principal Investigator of numerous grants funded by the Health Resources and Services Administration (HRSA) totaling over \$22 million in her tenure at Michigan State University focused on building a diverse health professions workforce.

Dr. Lipscomb has served in various national and regional leadership positions with the Association of American Medical Colleges (AAMC), including National Chair of the AAMC Group on Student Affairs (GSA), National Chair of the GSA Committee on Student Diversity Affairs (COSDA), GSA Central Regional Chair and National Steering Committee member of the Group on Diversity and Inclusion (GDI). Dr. Lipscomb is also the Chair of the National Council on Diversity in the Health Professions (NCDHP).



Lisa Lowery, MD, MPH, CPE, FAAP, FSAHM

Dr. Lisa Lowery is a native of Grand Rapids and a graduate of Ottawa Hills High School. She received her Bachelor of Science Degree in Microbiology, with Honors from Michigan State University. Dr. Lowery received her medical degree from the University of Michigan Medical School. She completed a combined Internal Medicine and Pediatric Residency program at Spectrum Health-Butterworth Michigan State University/Grand Rapids Campus. Dr. Lowery completed a subspecialty fellowship in Adolescent Medicine at the Johns Hopkins University in Baltimore, MD. While at the Johns Hopkins, she obtained a Master of Public Health in the Department of Population and Family Health Sciences with a Certificate of Concentration in Maternal and Child Health.

Dr. Lowery is the Section Chief of Adolescent Medicine and an Associate Program Director for the Combined Internal Medicine/Pediatrics Residency Program. She is an Associate Professor at Michigan State University College of Human Medicine Department of Pediatrics and Human Development. In April 2020, she started at Michigan State University College of Human Medicine as the Assistant Dean for Diversity and Cultural Initiatives.

Looking Back to Look Ahead: Rediscovering and Expanding the Foundations of Substance Use Research with Diverse Populations as we Enter a Post-Pandemic World



Priscilla Martinez, MPhil, PhD

Dr. Martinez is a Scientist at the Alcohol Research Group/Public Health Institute in Emeryville, CA. Her research explores the relationships between immune function, health, and alcohol use to address alcohol-related racial/ethnic health disparities in the US. Her work also examines ways to improve participation of racial/ethnic minorities in alcohol research, and health messaging about alcohol as a breast cancer risk factor.



Leena Mittal, MD

Leena Mittal is the Chief of the Division of Women’s Mental Health at Brigham and Women’s Hospital and an Instructor in Psychiatry at Harvard Medical School, and serves as the Program Director for the Women’s Mental Health Fellowship at the Brigham. Additionally, Dr Mittal is the Associate Medical Director for the Massachusetts Child Psychiatry Access Program for Moms (MCPAP for Moms), an innovative statewide consultation service for providers seeing pregnant and postpartum women with mental health and substance use conditions. Dr. Mittal has numerous publications and speaks nationally on the treatment of mental health and substance use conditions



Patricia Molina, MD, PhD

Dr. Molina completed her MD training at the Universidad Francisco Marroquin in Guatemala, Central America. Thereafter, she pursued a PhD in Physiology at LSUHSC under the mentorship of Dr. John J. Spitzer, presenting her dissertation on “Ethanol-endotoxin interaction with carbohydrate metabolism”. Her postdoctoral experience at Vanderbilt University was supported by a NIGMS Minority Supplement Grant under the mentorship of Dr. Naji N. Abumrad. She progressed through the academic ranks initially as an Assistant Professor of Surgery and Physiology at the State University of New York, Stony Brook and subsequently as Director of Surgical Research at North Shore University Hospital. During that period, she held a Guest Scientist appointment at Brookhaven National Laboratory prior to joining the Department of Physiology at LSUHSC as an Associate Professor. Since becoming a faculty member at LSUHSC, Dr. Molina has obtained tenure and promotion to the rank of Professor, and has been named the Richard Ashman, PhD Professor in Physiology. On September 2008, she was appointed Department Head for Physiology. Dr. Molina's research has been funded continuously since completing her PhD degree. She has mentored several undergraduate, graduate and post-doctoral trainees. Dr. Molina is a member of the faculty of the School of Graduate Studies, the Graduate Education Committee in Physiology, The Graduate Advisory Council, and is a mentor for the LSUHSC Interdisciplinary Graduate Program. Dr. Molina is an active member of

Looking Back to Look Ahead: Rediscovering and Expanding the Foundations of Substance Use Research with Diverse Populations as we Enter a Post-Pandemic World

several committees within the LSUHSC and is also actively involved in the Scientific Community outside the institution. Currently, she is the Chair for the National Hispanic Science Network on Drug Abuse and Past President of the American Physiological Society.



Marisela Morales, PhD

Dr. Marisela Morales received a BS in Biochemistry and Microbiology at the Instituto Politecnico Nacional (IPN), School of Biological Sciences in Mexico, a MS in Biochemistry and Cell Biology at the Universidad de Guanajuato, Institute of Experimental Biology (IIBE) in Mexico and a Ph.D. in Biochemistry and Cell Biology at the Universidad de Guanajuato, Institute of Experimental Biology in Mexico. She was a postdoctoral trainee at The Scripps Research Institute in La Jolla, CA under the mentoring of Dr. Floyd Bloom. She is currently a Senior Investigator in the NIDA Intramural Program at NIH in Baltimore, MD. She is also a Section Chief of the Neuronal Networks Section, a Branch Chief of Integrative Neuroscience Research Branch, a Director of NIDA/IRP Cores, and the NIDA IRP Associate Director of Technology. Dr. Morales has been investigating neurocircuitry of motivated behavior, as well as molecules, cells and neuronal pathways central to the neurobiology of drug addiction.



Tyler Nelson

Tyler Nelson is an undergraduate psychology student at California State University, Long Beach. She is currently working with Dr. Arturo Zavala to investigate the rewarding effects of alcohol in adolescent male and female rats. She is particularly interested in the neuroscience of addiction, the neurobiological mechanisms that give rise to mental illness (i.e., depression, anxiety, schizophrenia) and the pharmacological approaches used to treat these conditions. She is also an NIH-funded BUILD Infrastructure Leading to Diversity (BUILD) Scholar and plans to apply to graduate school this Fall. Her career goals are to obtain a Ph.D. in Neuroscience in hopes of becoming a research faculty to mentor students.



Laura O'Dell, PhD

Dr. O'Dell is a Professor in the Department of Psychology at The University of Texas at El Paso (UTEP). She received her Ph.D. in Behavioral Neuroscience from Arizona State University, and then conducted her post-doctoral training at The Scripps Research Institute where she eventually served as a Staff Scientist. Dr. O'Dell's research program uses rodent models to study the underlying neural mechanisms that promote tobacco use in vulnerable populations, including females, adolescents, and persons with diabetes. Her laboratory combines neurochemical and molecular

Looking Back to Look Ahead: Rediscovering and Expanding the Foundations of Substance Use Research with Diverse Populations as we Enter a Post-Pandemic World

approaches with behavioral models in order to provide a better understanding of the problem of drug addiction. For the past 15 years, her research program has been independently funded by the National Institute on Drug Abuse and the American Diabetes Association. Dr. O'Dell has a deep interest in promoting young scientists who want to pursue a career in neuroscience, particularly trainees from diverse backgrounds. Her research program is built on a strong trainee-mentor foundation, her panel on Implicit Bias will stimulate a discussion regarding essential factors for navigating a successful career path in drug addiction.



Caroline Palavicino-Maggio, PhD

Dr. Caroline Palavicino-Maggio is a Research Fellow in the Department of Neurobiology at Harvard Medical School in the laboratory of Dr. Ed Kravitz. Dr. Palavicino-Maggio seeks to elucidate the neural circuitry that governs female aggression. Dr. Palavicino-Maggio earned her PhD with honors from Rutgers University, at the New Jersey Medical School and her BS degree from Rider College. Shortly after she began graduate school, she created her project independently, while performing lab rotations with experts in the field of intestinal nutrient transporters and dopamine receptors, respectively. As a result, she was awarded the NIH Independent Dissertation Research R36 Grant to carry out her thesis project. Dr. Palavicino-Maggio has also been selected for many prestigious awards from the Rutgers Society Foundation, New York Academy of Sciences, and Sloan Research Fellowship. Most recently, she was acknowledged by Cell Press in their “100 most Inspiring Hispanic/Latinx scientists in America” list. She is also a strong advocate for social justice and encouraging young people from underrepresented backgrounds to pursue STEM careers.



Ruben Parra-Cardona, PhD

Dr. Parra-Cardona is an Associate Professor in the Steve Hicks School of Social Work, at the University of Texas at Austin. He also serves as Area Director of Research at the Latino Research Institute at UT Austin. His research is focused on the cultural adaptation of prevention parenting interventions for low-income Latina/o immigrant communities. His research has been funded by the National Institute of Mental Health and currently, by the National Institute on Drug Abuse. He is also actively engaged in the implementation of this line of research in Mexico and Chile.



Erika Perez, PhD

Erika Perez PhD, Assistant Professor of Neuroscience, Department of Psychology, Xavier University of Louisiana. Dr. Perez is interested in the neural mechanisms underlying addiction, in particular, nicotine and alcohol. Her lab focuses on characterizing the role of various receptor

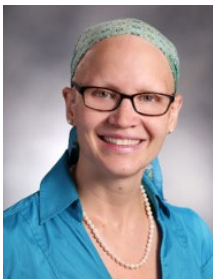
Looking Back to Look Ahead: Rediscovering and Expanding the Foundations of Substance Use Research with Diverse Populations as we Enter a Post-Pandemic World

systems as viable drug cessation aids; in particular, she and her students are investigating the role of neurokinin and GluK1-containing kainate receptors in modulating nicotine consumption. The lab uses a variety of techniques to measure drug consumption, dopamine release and withdrawal associated behaviors in mice.



Miguel Pinedo, PhD

Dr. Pinedo has an invested interest in better understanding the intersection between migration and health. Though migrant health has become an important facet of health research, migration has rarely been examined as a social determinant of health. His work addresses this critical area by focusing on how different migration experiences contribute to health disparities, particularly among Latino populations. Specifically, his work investigates how social- and structural-level factors associated with migration to the US; voluntary and forced migration (e.g., deportation); domestic migration within Mexico; and migration to high-risk environments (e.g., settings with increased availability of alcohol and drugs) relate to the epidemiology of substance abuse, HIV risk, and related harms. A large proportion of his work has focused on Mexican migrants residing on both sides of the US-Mexico border, a high-risk region for alcohol and drug abuse and HIV. Overall, his research underscores the importance of migration-related factors in shaping health behaviors, risk practices, and health outcomes. Prior to joining UT, Dr. Pinedo received his PhD in Global Health from the UC San Diego and completed his postdoctoral training at UC Berkeley. He also previously earned his Master in Public Health from UC Berkeley.



Cara Poland, MD, Med, FACP, DFASAM

Dr. Cara Poland is a recognized expert in addiction medicine. She is a faculty member at Michigan State University. She earned her medical degree from Wayne State University and was trained in internal medicine at St. Joseph Mercy Hospital in Ann Arbor, Michigan and in addiction medicine at Boston Medical Center in Boston, Massachusetts. She received her master's degree in education from Boston University. She has an interest in educating healthcare providers and providers-in-training to improve care for patients with substance use disorders particularly during pregnancy and early parenting.



Daisy Ramirez-Ortiz, PhD

Daisy Ramírez-Ortiz is a Postdoctoral Associate in the Department of Epidemiology at Florida International University (FIU). Her particular research interest is in improving retention and reengagement in HIV care in Latino populations with specific attention to immigrants and migrants. She is currently the Principal Investigator of a multi-methods pilot project

Looking Back to Look Ahead: Rediscovering and Expanding the Foundations of Substance Use Research with Diverse Populations as we Enter a Post-Pandemic World

funded by FIU's Research Center in Minority Institutions that is examining multilevel barriers to retention and re-engagement in HIV care among Latino immigrants with HIV in Miami-Dade County, Florida. She also collaborates in the NIH-funded research projects Women-centered HIV Care Practices that Facilitate HIV Care Retention and Viral Suppression in the Presence of Adverse Sociocultural Factors and Just-in-Time Adaptive Interventions For Improving Young Latino Sexual Minority's Success in HIV Therapy to understand barriers and facilitators influencing HIV care and treatment among racial/ethnic minorities. She is a fellow of the enhanced Interdisciplinary Research Training Institute on Hispanic Drug Abuse. She received a PhD in Public Health with concentration in Epidemiology from FIU in May 2020. Daisy holds a Master of Public Health from University of Miami and a Bachelor of Science in Biology from University of Puerto Rico at Humacao.



Kerry Ressler, MD, PhD

Kerry J. Ressler, MD, PhD, is the James and Patricia Poitras Chair in Psychiatry, and Chief of the Division of Depression and Anxiety Disorders at McLean Hospital, and Professor of Psychiatry at Harvard Medical School.

Kerry received his Bachelor of Science degree in molecular biology from M.I.T., and his M.D./Ph.D. from Harvard Medical School. Prior to moving to McLean in 2015, he spent 18 years at Emory University and Grady Memorial Hospital in Atlanta, where he founded the Grady Trauma Project, a study focused on understanding the Psychology, Biology, and Trauma-Related factors contributing to intergenerational cycles of trauma exposure and Posttraumatic Stress Disorder (PTSD), Substance Abuse and Depression in over 13,000, primarily Black American, participants from urban Atlanta. This cohort became a core group for the initiation of the Psychiatric Genomics Consortium – PTSD workgroup (now > 200k samples worldwide), for which he is a co-leader, to understand the genetic architecture of PTSD.

He is also a prior Howard Hughes Medical Institute Investigator, a member of the National Academy of Medicine and Past-President of the US Society for Biological Psychiatry. His work focuses on translational research bridging molecular neurobiology in animal models with human genetic and epigenetic research on emotion, particularly fear and anxiety disorders. He has published over 400 manuscripts ranging from genetic basic molecular mechanisms of fear processing to understanding how emotion is encoded in the brain across animal models and human patients.

Looking Back to Look Ahead: Rediscovering and Expanding the Foundations of Substance Use Research with Diverse Populations as we Enter a Post-Pandemic World



Mariana Sanchez, PhD

Mariana Sanchez is an Assistant Professor in the Department of Health Promotion and Disease Prevention and a Research Associate at the Center for Research on U.S. Latino HIV/AIDS and Drug Abuse (CRUSADA) in the Robert Stempel College of Public Health and Social Work at Florida International University. She has over 20 years of experience in conducting longitudinal and community-based health disparity research across the lifespan including youth, emerging adults, and adults. Her program of research seeks to gain a deeper understanding of the cultural risk and protective factors that influence health behaviors, particularly alcohol misuse, and its related consequences among Latinx populations. The bulk of her research has focused on examining how sociocultural determinants impact mental health and substance use among vulnerable Latinx subgroups including recent immigrants, unauthorized immigrants, and farmworkers. Over the past decade she has had continuous NIH funding that has provided her the opportunity to be involved in various longitudinal, community-based studies on socio-cultural determinants of pre- to post-immigration alcohol use trajectories among young adult recent Latinx immigrants. Dr. Sanchez is also a co-investigator in the Adolescent Brain and Cognitive Development Study (ABCD). She serves on *ABCD Culture & Environment Workgroup*, where she guides in the selection of cultural instruments that are brief, valid, developmentally appropriate, and cross-culturally relevant across the national study sites. Ultimately, she aspires that knowledge gained from her research informs the development of culturally relevant evidence-based interventions that target identified vulnerability factors and leverage key protective factors in preventing substance misuse and its related consequences among Latinx and other racial-ethnic minority populations.



Cherilyn Sirois, PhD

Dr. Cherilyn Sirois works in biomedical sciences, focusing on innate immunity, immunity in the lungs, pattern recognition receptors, nucleic acid sensing, quantitative molecular imaging and hi-res fluorescence microscopy, molecular cell biology, microbiology, parasitology, biomedical research in Latin America/Ecuador. She mostly does the editing part these days with Cell Press.



Sean Valles, PhD

Sean A. Valles is Associate Professor and Director of the Michigan State University Center for Ethics and Humanities in the Life Sciences. He is author of the 2018 book, *Philosophy of Population Health: Philosophy for a New Public Health Era* (Routledge Press) and co-editor (with Quill R. Kukla) of the Oxford University Press book series, "Bioethics for Social

Looking Back to Look Ahead: Rediscovering and Expanding the Foundations of Substance Use Research with Diverse Populations as we Enter a Post-Pandemic World

Justice”. He is a philosopher of health, focusing on the evidentiary and ethical complexities of how social context shapes health.



Irving Vega, PhD

Irving E. Vega obtained his undergraduate degree in Biology from the University of Puerto Rico-Mayaguez Campus. He continued his research training in the Department of Cell Biology and Neuroscience at the Graduate School of New Brunswick, Rutgers University, earning his PhD. Dr. Vega completed a postdoctoral fellowship in the Neuroscience Department at Mayo Clinic Jacksonville, where he developed his research career focusing on the pathobiology of Alzheimer’s disease. Dr. Vega joined the faculty as an Associate Professor in the Department of Translational Neuroscience at Michigan State University College of Human Medicine campus in Grand Rapids, MI in 2014. Here, his research focuses on molecular and biochemical mechanisms that modulate the accumulation of pathological tau proteins in Alzheimer’s disease and related dementias. Dr. Vega is also working on ethnic disparities and the influence of ethnoracial factors on blood biomarkers in Alzheimer’s disease.



Arturo Zavala, PhD

Dr. Arturo Zavala is a Professor in the Department of Psychology at California State University, Long Beach (CSULB). He received his Ph.D. in Behavioral Neuroscience from Arizona State University. Dr. Zavala’s research program is focused on the functional consequences of early exposure to psychoactive drugs on the susceptibility to drugs of abuse later in life, and on the role of serotonin in modulating the effects of drugs of abuse. His laboratory combines neurochemical, molecular, and pharmacological approaches with animal behavioral models to understand the neural basis of addiction. Dr. Zavala is Co-Director of the CSULB Building Infrastructure Leading to Diversity (BUILD) program, funded by the National Institutes of Health (NIH), which aims to increase the number of underrepresented students entering biomedical and health-related research careers.

Looking Back to Look Ahead: Rediscovering and Expanding the Foundations of Substance Use Research with Diverse Populations as we Enter a Post-Pandemic World



NHSN Steering Committee

Patricia Molina, MD, PhD

Chair, NHSN

Richard Ashman Professor & Head, Department of Physiology
Director, Alcohol & Drug Abuse Center

Louisiana State University Health Sciences Center New Orleans



Avelardo Valdez, PhD

Co-Chair, NHSN

Professor

School of Social Work

University of Southern California



Margarita Alegria, PhD

Director, Center for Multicultural Mental Health

Research, Cambridge Health Alliance

Professor, Harvard Medical School



James Anthony, PhD

Professor of Epidemiology and Biostatistics

Michigan State University



Tara Bautista, PhD

Postdoctoral Fellow

Department of Psychiatry

Yale University School of Medicine



Carlos Bolanos-Guzman, PhD

Associate Professor

Department of Psychology

Texas A&M University



Miguel Cano, PhD, MPH

Assistant Professor

Department of Epidemiology

Florida International University

Looking Back to Look Ahead: Rediscovering and Expanding the Foundations of Substance Use Research with Diverse Populations as we Enter a Post-Pandemic World



Alice Cepeda, PhD, MS
Associate Professor
School of Social Work
University of Southern California



Felipe Gonzales-Castro, PhD
Professor
College of Nursing & Health Innovation
Arizona State University



Flavio Marsiglia, PhD
Distinguished Foundation Professor of Cultural Diversity and Health
Director
School of Social Work
Arizona State University



Luis Natividad, PhD
Assistant Professor
College of Pharmacy
The University of Texas at Austin



Laura O'Dell, PhD
Professor
Department of Psychology
University of Texas at El Paso



Arturo Zavala, PhD
Associate Professor of Psychology
California State University, Long Beach

Looking Back to Look Ahead: Rediscovering and Expanding the Foundations of Substance Use Research with Diverse Populations as we Enter a Post-Pandemic World

Thank you for attending the 2021 NHSN Conference.

We look forward to seeing you in Grand Rapids, MI in 2022!



National Institute
on Drug Abuse



National Institute
on Alcohol Abuse
and Alcoholism



National Institute
on Minority Health
and Health Disparities



College of Human Medicine
MICHIGAN STATE UNIVERSITY



**Interdisciplinary Research Training
Institute on Hispanic Drug Abuse**



Support for this Conference

Funding for this conference was made possible (in part) by **2R13DA026647-11** from the National Institute on Drug Abuse (NIDA), National Institute on Alcohol Abuse and Alcoholism (NIAAA), and National Institute on Minority Health and Health Disparities (NIMHD) of the National Institutes of Health. The views expressed in written conference materials or publications and by speakers and moderators do not necessarily reflect the official policies of the Department of Health and Human Services; nor does mention by trade names, commercial practices, or organizations imply endorsement by the U.S. Government.